

FC R 2 - Stone Chip Metal Roof Tiles - Roofing

Assembly #	Stud Size (mm)	Steel			Roofing	Underlay
		Thickness (mm)	Coating	Grade		
FC R 2	FRAMECAD® Roof Battens	0.55 Minimum	Z180 to Z350	G350 to G550	FRAMECAD® Stone Chip Metal Roof Tiles	FRAMECAD® Tuff Stuff

Battens

FRAMECAD® Batten spacing shall be at 350mm - 370mm centers maximum.

Roofing

FRAMECAD® Stone Chip Metal Tile fixed to FRAMECAD® cold formed steel roof battens. Full tile sheets shall be used where possible. Tiles should be laid in a "herringbone" formation.

Tiles should be installed from the bottom up to ensure that the top tile overlaps to prevent water ingress.

Minimum roof pitch 15 degrees.

Underlay

Install with a 150mm overlap between runs, with each higher run lapping over the layer below. The product must be installed in such a way to prevent water from pooling. The wrap may be installed across spans up to 1200mm without the need of a supporting mesh. Install external cladding without delay.

To be effective as a thermal insulator there must be a minimum air gap of 40mm adjacent to at least one reflective foil face.

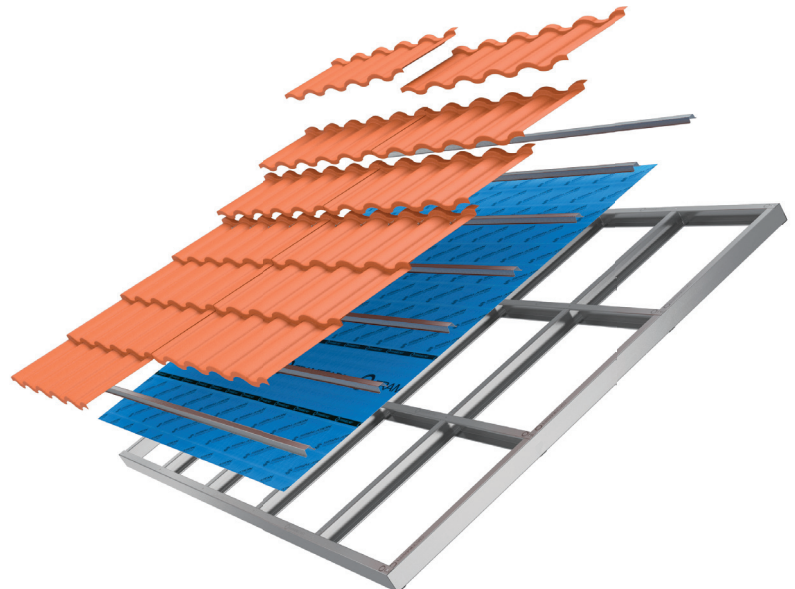
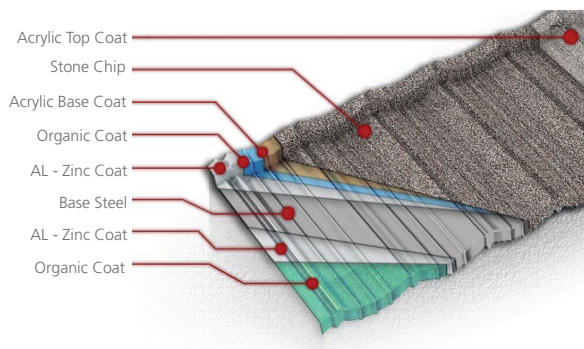
Note: Aluminum foil is susceptible to alkali attack and therefore should not come in contact with wet concrete.

Fastening
Roofing

FRAMECAD® Stone Chip Metal tiles to be fixed using 001236 FRAMECAD® X-Drive®, 10g x 19mm Sharp Point screws, positioned at the tile lip at 300mm centres on all roofing battens.

Note: For a full list of roofing accessories and tooling please refer to the FRAMECAD® Roofing Solutions for Cold Formed Steel Construction brochure.

Refer to the FRAMECAD® Roofing Solutions and Metal Tiles, cutting and bending for full installation details.



NOTE: In order for FRAMECAD® Roof Solutions to perform as designed all components must be installed exactly as prescribed. Substituting building components may produce an entirely different solution and may seriously compromise performance.

